

# Fall 2021

**University of Texas at San Antonio**



*“The Spirit of San Antonio”*

# Handbook

## **The UTSA Spirit of San Antonio;**

began as diverse group of students from all walks of life and cultures who came together at this dynamic and growing university to form a family and a home for friendships and memories.

### **Mission Statement**

**Through hard work, determination and a passion for performing,** we encourage pride throughout our campus, our alumni, and our community.

**Through our performances,** we aspire to show how the beauty and power of the performing arts at UTSA can create better leaders and musicians, enhance our personal growth through cooperation, collegiality and teamwork, as well as spread Roadrunner pride.

**When we are together,** in those moments, you see and hear future leaders, achievers, doctors, lawyers, civil servants, performers, scientists, and business pioneers who embody the very essence of what it means to be a Roadrunner.

Our spirit is undeniable,  
We come from the great state of Texas,  
We are Roadrunners,  
We are UTSA,

**and We are the Spirit of San Antonio.**

# UTSA SOSA Professional Staff

<b>Music Department Chair</b>	Dr. Tracy Cowden
<b>Assistant Chair</b>	Dr. Stacey Davis
<b>Administration</b>	Naomy Ybarra – Senior Admin. Assoc Steven Hill Cindy Solis
<b>Band Directors</b>	Prof. Ron Ellis Dr. John Zarco
<b>Spirit of San Antonio Director</b>	Prof. Ron Ellis
<b>Athletic Band Percussion Coordinator</b>	Benjamin Pyles
<b>Auxiliary Coordinator</b>	Randi Miles
<b>Athletic Bands Logistics and Admin</b>	Don Marchand
<b>Twirling Coordinator</b>	Mary Ann Srulowitz
<b>UTSA Pom Squad Coordinator</b>	Christina Lenart
<b>Graduate Assistants</b>	Hector Garcia BME Texas State University  Jayland Brown BME Howard Payne University
<b>Student Assistants</b>	TBA

## 2021 UTSA Spirit of San Antonio 11.0SA Student Staff

### UTSA Music Spirit of San Antonio

2021 Student Staff  
(Alphabetically)

#### **Graduate Students**

Hector Garcia  
Jayland Brown

#### **Drum Major**

Mary Shaw

#### **Assistant Drum Majors**

Daniel Campa  
Kenneth Gonzales  
Abrianna McCray  
Juan Ramirez

#### **Rehearsal Coordinator**

Alex Prentice

#### **Twirler**

Alexis Tanner

#### **Colorguard**

Arielle Imhoof  
Amanda Plura  
Katelyn Schmidt

#### **Pom Squad**

Madeline Mendoza  
Jennifer Taylor  
Lauren Walters

#### **Piccolo**

Rebekah Alegria  
Angela Ragsdale  
Hayley Walkingstick

#### **Clarinet**

Kayla Bellis  
Zayah Hough

#### **Saxophone**

Noel Llanes  
Jessy Rodriguez

#### **Trumpet**

Alissa Esper  
Danielle Bickmore  
Ronald Garcia  
Michael Ortiz  
Hannah Plemons  
Myles Thornton

#### **Mellophone**

Gavin Campos  
Johanna Gutierrez  
Sara McClain

#### **Trombone**

Brandin Castillo  
Gracie Hende  
Kyle Palma  
William Regalis  
Brennan Wingenter

#### **Baritone**

Noah Ramon

#### **Tuba**

Kenyon McCrary  
Alejandro Palacios

#### **Percussion**

TBA (selected  
at camp)

# **Spirit of San Antonio Student Association**

The Spirit of San Antonio Student Association is the official student organization of the UTSA Spirit of San Antonio at the University of Texas at San Antonio. This important organization represents the UTSA Band Program to UTSA Administration and the UTSA Student Government Association (SGA). Membership in SOSASA is open to all SOSA members as well as any student at the University of Texas at San Antonio.

## **SOSA Band Council and SOSASA representatives**

### **Executive Board**

**Established at Camp Each Fall**

# Band Member Responsibilities

## Rank and File Member

- Present and punctual for all rehearsals and performances, there will be no discussion regarding tardiness or absences.
- Learn all music and chart positions.
- Openly receive instruction while maintaining a **positive attitude**.
- Prepared with all necessary materials; this includes all music, drill, and appropriate attire (athletic shoes, and comfortable clothing).
- **Athletic shoes must be worn at all times while in rehearsal.**

## Staff Members

- Present and punctual for all rehearsals and performances.
- Learn and memorize all music and chart positions.
- Openly receive instruction while maintaining a **positive attitude**.
- Conduct section rehearsals and warm-ups as required.
- Assist directors with part placement.
- Provide leadership to respective section and assist the Director in any way possible.
- Serve as spokesperson for respective section.
- As per Director, has final word in all section decisions and image on and off the field.
- Answer any/all questions and assist members in all situations.
- Assist director and staff in teaching marching fundamentals and instrumental proficiency.
- Make sure that uniforms and instruments are well taken care of.
- First to arrive/last to leave

## Drum Majors

- Includes all staff member responsibilities.
- Highest ranking performing members of SOSA.
- Work with Director in leading rehearsals and performances.
- Answer any question that student staff may not be able to answer.
- Assist Director and Professional Staff in the proper teaching of marching fundamentals and other techniques to aid rehearsals and performances.
- First to arrive/last to leave

# Policies and Procedures

## Alcohol/Drug Policy

All members of SOSA have a sense of pride and devotion to the University of Texas at San Antonio and the history of SOSA. We depend on 100% of the membership being able to perform to their full potential at all times.

**Therefore, the use of any drugs, alcohol, or cigarettes will not be tolerated while in uniform, in transit, on a bus or airplane, or in any other capacity of official representation of the University of Texas at San Antonio. This includes all rehearsals, and the immediate rehearsal areas.**

The Director will have the final say on these items/situations, so it is in your best interest to not test the limits of the previous statement. Our public image is of vital concern and should be treated as such. Do your part to enhance the image of SOSA's and your rewards will be far greater than the momentary pleasure of being intoxicated.

If you are found to be in violation of the Alcohol/Drug policy, you will be dismissed from the band with a failing grade, and your name will be forwarded to the UTSA Office of Student Affairs for consideration under violation of the UTSA Alcohol/Drug policy.

## Music

You will receive 2 flip folders, one for pre-game music and stand tunes as well as one for half-time music. All music, charts, coordinate sheets, etc., will be issued during rehearsals.

**YOU ARE RESPONSIBLE FOR YOUR ISSUED MUSIC.... KEEP IT SAFE.**

If you need extra parts, please contact your section's student staff member or obtain a copy from another member of your section. If you lose or misplace your flip folder, you may replace it for \$20 each. Flip folders are to be turned in during equipment check-in.

## **Instrument Policy**

UTSA has purchased a matched set of instruments for SOSA. This will enable us to blend and tune in a relatively consistent manner. We encourage all members to utilize these instruments so they do not damage their personal instruments. If you take your instrument out of the storage facility (other than to practice on the field) you must take the case with you, no matter what the instrument is. If an individual is found to be in possession of an instrument without a case that is not associated with a rehearsal, it will lower one's final grade by 2 letters.

**No instrument may go into an automobile without a case at any time.**

**\*\*\*Do not leave instruments unattended in a vehicle at any point\*\*\***

All percussion equipment will be issued at the conclusion of Percussion Camp. All wind instruments will be issued during the first couple days of band camp. Also, all instruments must be returned in good condition following the last performance of the season. You are responsible for all damages beyond normal usage and wear.

Normal maintenance will be required on your part (oil valves, grease slides, clean horn, etc.); however, if emergency repairs are needed, we will send the instrument out as soon as possible. Please inform your staff member or a Student Assistant ASAP so that your instrument can be sent in for repairs. If another instrument is available, you will be issued that one until your instrument is back from the shop.

**Note – Any maintenance or repairs that are deemed to be beyond normal wear and tear will be the responsibility of the student possessing that instrument or equipment. Until these items are clear, a financial hold of double the estimated amount will be placed on the students record.**

## **University Equipment**

All university equipment should be turned in at the designated time and place following the last performance of the marching season. Failure to return equipment in satisfactory condition (as determined by the Director) will result in failure of the course. A financial and academic "Hold" will be imposed until all costs/fines are settled. Check-in for the Fall 2018 will be posted after the last home game, pending the Bowl Schedule.



## **Uniform Policy**

Uniforms will be fitted during band camp. Uniforms will be altered to ensure proper fitting. SOSA uniforms must be worn properly in their entirety at all times. The uniform will be cleaned several times during the season when needed. It is your responsibility to keep us aware of any problems with your uniform. If we do not hear of the things that need fixing, we will assume that your uniform is up to standards.

**Note – Any maintenance or repairs that are deemed to be beyond normal wear and tear will be the responsibility of the student possessing that uniform or uniform part. Until these items are clear, a financial hold of double the estimated amount will be placed on the students record.**

## **Auxiliaries**

Uniforms will be collected at a time designated by the Director. An academic “Hold” will be imposed until you return your uniform after the return date. It is your responsibility to keep us aware of any problems with your uniform. If we do not hear of the things that need fixing, we will assume that your uniform is up to standards.

## **Uniform**

Each band member must supply the following:

- All white crew socks (mid-calf) for winds and percussion (no short/ankle socks are permitted, if a performer is wearing short socks or a color other than white, they will be given an administrative absence from the performance).
- white or flesh colored shorts/spunks type undergarment
- Auxiliaries may have other responsibilities and will be informed by their staff.

## Performance/Game Day Wear

- **Game-Day Rehearsal/Team-Walk/Pep Rally/Extra Performance Uniform-**
- SOSA Warm-up Suit (including jacket), current Orange SOSA “Property Of” shirt, all white crew socks, and white polished band shoes
- Auxiliaries may have other responsibilities and will be informed by their staff.
  
- **Full Uniform** - current Orange SOSA “Property Of” shirt, white or flesh colored shorts/spanks type undergarment, bibbers, jackets, gloves, gauntlets, hats, and plumes, all white crew socks, and white polished band shoes.
  
- **Note** - Each member is required to wear the current Orange SOSA “Property Of” shirt and white or flesh colored shorts/spanks type undergarment when in Full-Uniform.
  
- **In the Stands**  
Jackets on or off is determined by directors, staff and drum majors  
Only a UTSA hat is permitted in the stands while in uniform. (bill forward)  
Eating and drinking is permitted in uniform, but with extreme caution.
  
- **Performance Dress** – each member will receive a travel bag, 2 orange property-of shirts, and 1 SOSA Warm-up Suit (Jacket and Pants). Winds and Percussion will also receive a pair of white marching shoes.
  
- **For Pep Band gigs** (Not on game-day) – Dress is Orange “Property of” shirt and Warm-Up Jacket and Pants, white socks and marching shoes.
  
- **For football gameday or full marching band performance days** – Dress is Orange “Property of” shirt and Warm-Up Jacket and Pants, and white marching band shoes with white socks. Members will be given gloves to keep in their bag and use with the full uniform.

## SOSA Storage Facilities

This space must be kept clean, organized, and accessible at all times. Instruments must be stored IN CASES to avoid damage. This space is for storage of SOSA equipment only. Therefore, leaving personal belongings is prohibited.

**It is imperative that this space be kept organized and clean at all times. Any university equipment (instruments, uniforms, etc) NOT stored properly will result in 2 absence points assigned to the responsible student.**

Any questions, please see any Drum Major or Student Assistant.

# Rehearsal Procedures

## Materials

The following materials are required at each rehearsal:

**Winds:** Instrument in good working order, any materials needed for proper instrument function and maintenance (reeds, valve oil, etc), a pencil, music, lyre, flip folders, and appropriate clothing and running/tennis shoes.

**Percussion:** Appropriate sticks and mallets, music, clothing, and running/tennis shoes.

**Auxiliaries:** All practice visual equipment required for current shows and pre-game, appropriate rehearsal uniform and footwear.

**All:** Minimum size ½ gallon water jug or camelback required at all rehearsals.

## Attire

Dress in a manner conducive to the physical demands of the activity. Wear shoes that enable you to accurately execute our marching style (athletic shoes strongly recommended). **Sandals or open toed shoes of any type are not allowed.** Wear clothes appropriate to weather conditions, which may include rain or cold weather.

## Schedule

The SOSA rehearses on Mondays, Wednesdays, and Fridays 7:00 - 9:30PM. Percussion and Auxiliary members also rehearse on Mondays and Wednesdays from 6:00 - 7:00PM. Please check your **UTSA email account** each rehearsal day by 1 PM for any announcements and reconfirm, if possible, by 4 PM for updates.

## Inclement Weather

Decisions to change rehearsal due to inclement weather are made by the Director only at the scheduled rehearsal time. Do not call, email, or message the Band Office, Music Office, or faculty. Unless told specifically to the contrary by a Student/Professional Staff member, or Director, **always assume that regular rehearsal will occur in the expected location. Professional staff will be at the rehearsal site to make sure everyone receives updated information.**

## **Beginning of Rehearsal**

On regular rehearsal days you may park only in parking spaces designated by your decal. Please park legally. University Bands will neither pay nor dispute any parking ticket you receive. Attendance will be taken promptly at 7:00 PM.

## **During Rehearsal**

All necessary materials must be easily accessible to you throughout rehearsal. Winds will have music, charts, flip folders, and pencils throughout each rehearsal. Your complete concentration and committed work are expected at all times. All directions will come from the tower first, with “field time” to follow. After each segment, members will have time to “check” and “fix” with tower comments to follow.

## **Ending Rehearsal**

Your attention to announcements is essential, as they will be from the director and drum majors only. This is our only form of face-to-face communication between games. No one is to leave the field until the Drum Major gives the official SOSA dismissal. After announcements, please assist with policing the practice field and surrounding areas for trash. All members are responsible for keeping practice areas trash free.

## **Points to Remember**

1. Each person in the band is given a set of charts and/or coordinate sheet.
2. Each person is assigned a charting number or symbol.
3. Mark your music with the counts and holds from your drill chart.
4. Water is crucial! Please drink plenty and have it come rehearsals!

## **Harassment/Hazing Policy**

The Spirit of San Antonio is committed to providing a bias-free, collegial and professional marching band environment in which every member is entitled to be treated with respect as an individual:

Our policy does not permit discriminatory harassment or hazing of any form.

Any unwelcome behavior, physical or verbal, or conduct that creates an intimidating, hostile or offensive environment is prohibited.

Abusing the dignity of any individual through racial, sexual, ethnic, or religious harassment will result in disciplinary action ranging from reprimand to discharge.

# Game Day Procedures

Band members must be in full uniform by the time designated on the game day itinerary, unless the Director has established an alternate uniform. There are NO EXCEPTIONS to this policy. Failure to do so will result in an administrative absence. Uniform standards are specified in the handbook.

## Game day rehearsals

Dress for game day rehearsals is as followed for all SOSA drum majors, winds, and percussion members: current SOSA “Property Of” t-shirt, SOSA Warm-up Suits (jackets not optional), all white crew socks, and polished white marching shoes.

Their respective coordinators will determine auxiliary Game-Day uniforms.

## SOSA Pre-game Activity

The entire band will assemble at the Alamodome at a time specified by the Director. SOSA will warm-up in sectionals and perform for the team walk as well as in small pep bands throughout the tailgating area. A detailed game day schedule will be distributed to all members during each game-week.

## Stadium Entry

SOSA will be in the Alamodome tunnel 30 minutes prior to kickoff. Attention will be called, the cadence will begin, and the band will march into the stadium. Each member of the ensemble will participate in all approved vocals and motions in the cadence. All members must maintain dignity at all times. Each member of the band will exhibit posture, horn carriage, and marching style consistent with our fundamental technique program. No member of the band will step out of the formation or stop to talk to a fan during stadium entry. Pay attention, have a good time, and maintain the traditions of our organization.

## In the Stands

Each member of the band will sit in his or her section’s assigned area. There will be water available for you in the stands. Pay attention to the drum major at all times. The auxiliaries will perform the appropriate routine with the winds. While the ball is in play, **you must stand**; you may not stand on the seats.

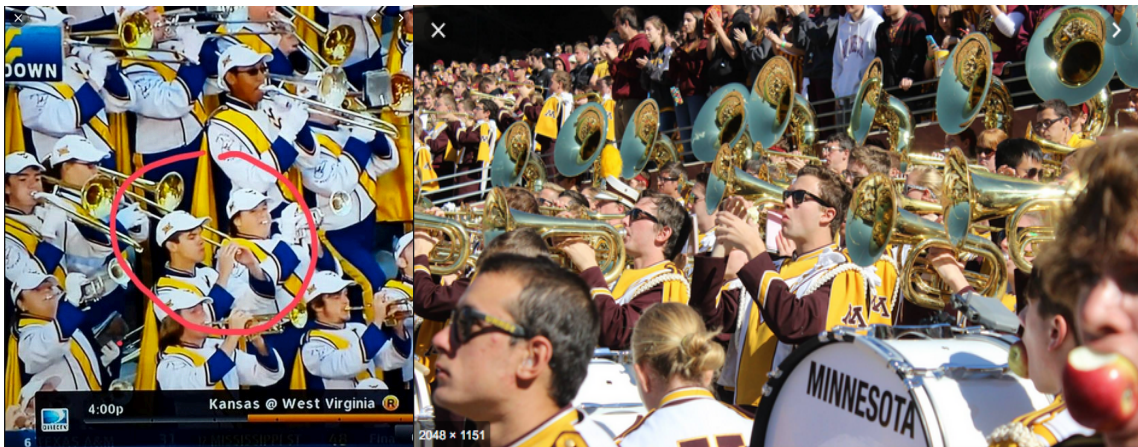
While the band is in the stands, all members will play throughout the entire game when called by a Drum Major or Director.

**All members will stand at all times when playing, no exceptions.**

We understand that many wind instrumentalists must protect their chops; we remind you that the best way to do that is to play consistently within your capable range with control and quality tone. You are not in the band to be a spectator only, nor to be a soloist.

Although participation in the marching band is a worthy social activity, we have higher priorities, which at times may curtail your ability to socialize.

- No standing in the aisle.
- Conversing with someone standing in the aisle is strictly prohibited.
- Allowing non-band members to stand or sit in the band section is also prohibited.
- Members may leave the stands to use the restroom at the discretion of their staff member (make sure to take off gloves, gauntlets, and hats).
- No more than two per section may leave at a time.
- If you don't return in a reason-able amount of time, a staff member will be sent to find you. Please do not exploit this time.
- **Cell-Phones** – this is a difficult item to discuss. What would we want on national TV? This is how we need to start this discussion. Talking and Texting should be non-existent. Pictures and Posting should be done in between band activities. Excessive or distracting use of cell-phones will may result in an absence being assigned.  
If a staff member or director deems that an individual's use of a cell phone is interfering with their performance at any time, the following will occur;
  - 1) warning to put cell phone away by a Drum Major
  - 2) if a second incidence occurs – phone will be taken away and returned after performance, **2 absence points assigned**
- Eating while band is playing – just don't be this person



We expect your assistance with these important policies.

When you leave the stands prior to half-time, all members should put all personal belongings under the seats and slide them near the middle of the section so that wandering hands cannot reach over and take your belongings. Leave the stands in full uniform, including gauntlets and gloves. Please move quickly and leave in order. Make sure you know before leaving the stands whether the show is being performed to the home or away stands.

### **Halftime**

Move quickly to the field from the stands. In the event of a visiting band, find your approximate position for the show and move away from the sideline in order not to detract attention from your guests' performance. Be very appreciative of the visiting bands' performance while concentrating on what you are about to do. At the end of your guests' show, move quickly to your sideline position and await the attention command. At the conclusion of your show, pick up any props, uniform parts, or music that has fallen to the ground; then move quickly back into the stands. Everyone should return to the band section in the stands immediately after half-time.

**Note: There is no third quarter break. Members who abuse a restroom or food break will receive 3 absences in their attendance record.**

### **After the Game**

At the conclusion of the fourth quarter, we will perform for the remaining fans. This is a very important part of the game day experience; therefore, no member of SOSA may leave the game before the official SOSA dismissal without approval from the Director. This must be arranged in advance of the game day. The length of this concert will vary; it will include much of our traditional stands repertoire and some half-time material. The band is required to remain in full uniform throughout this performance.

### **Away Trips/Bowl Games**

All policies and procedures apply on away trips including attendance. Repercussions for disregard of policies and procedures on an away trip may be greater than normal at the discretion of the Director. If SOSA is selected to represent the University in this manner, updated information will be provided prior to departure. Members will be held to all policies made known in this handbook during the course of the trip as well as any additional set policies.

## Show Spots

Pre-game is written for a specific number of members. Swings will be assigned on a rotating basis through all first year members (percussion excluded.) Show #1 will be written for the number of performers who are registered and in attendance on the first day of camp. All other shows will be designed for the most up to date number of performers available. If you do not receive a spot assignment for Pre-game or Show #1, there is always a possibility that you will perform in every performance after, but be flexible as our visual image in performance must be taken very seriously. If a member has an absence the rehearsal day before a game, every effort to fill their spot will be made.

## Cell Phones

We live in a technological society. Cell phones have become commonplace in people's everyday lives and are used to document, preserve, communicate, search the web, as well as all forms of entertainment. The Spirit of San Antonio organization does not prohibit the use of cell phones for picture taking during a rehearsal or game time atmosphere. Cell phones should NOT be used for texting or calling friends of family during a rehearsal or a game time performance. If a member is witnessed using a cell phone for texting or phone calls **while the band is playing or marching**, it will be recorded as an absence in the member's attendance record.



# **SOSA Uniform Washing and Handling**

# Attendance

Full Band Rehearsal downbeat is at 7:00PM (**Auxiliary** Sectionals at 6:00pm Mondays and Wednesdays, **Percussion** 5pm Monday OR Wednesday). You are expected to be in your circle warm-up position at this time. Those who are not checked in to circles are tardy for that rehearsal. There are no excuses for tardiness, nor is there discussion.

**Also, Leaving rehearsal before 8:45pm, for any reason, is considered an absence.** Leaving from rehearsal after 8:45p and before the conclusion of dismissal is considered a tardy.

Normal life events are taken into account in this attendance system. If you are suffering from a serious illness or personal issues, please make an appointment with the Director during his office hours. Absences and tardiness will not be discussed before, during, or immediately after rehearsals due to the time constraints of our show preparations.

**If you are too sick to rehearse, go home, go to the clinic, and turn in all paperwork associated with those absences. DO NOT MAKE YOURSELF MORE SUSCEPTIBLE TO EVEN MORE HEALTH ISSUES.**

As a courtesy, if you foresee an absence/tardy, please make every attempt to email the Director **before** 3:00 PM on the day of rehearsal. Emailing the director does not mean the absence is excused, it is simply a courtesy to allow the director and staff to better plan your rehearsals.

**AT REHEARSAL TIME, TARDINESS IS NEITHER EXCUSABLE NOR DEBATABLE.**

## Auxiliary and Percussion

Members of SOSA Auxiliary and Percussion are required to attend the sectional on Auxiliaries Monday and Wednesday from 6:00pm - 7:00pm (sectional), 7:00pm-9:30pm (full band).

Percussion –	Monday –	Battery 5:00pm – 7:00pm –	Full Band 7-9:30pm
	Wednesday –	Pit 5:00pm – 7:00pm –	Full Band 7-9:30pm

**Percussion and Auxiliary attendance will be taken promptly at 6:00pm on these days.**

# Grading

## Grading Scale

<u>Grade</u>	<u>Rehearsal/ Disc. Absences</u>	<u>Tardies</u>	<u>Perf. Abs. Exc</u>	<u>Unex.</u>
A	0-2 Absence Points	OR 0-4		
B	3 Absence Points	OR 5-6	1	
C	4 Absence Points	OR 7-8		
D	5 Absence Points	OR 9-10		
F	6 or more Absence Points	OR 11-12		1

**2 Tardy's = 1 Absence**

Grading and Absence Points for this class is based upon the following criteria:

1. Attitude and effectiveness; being on time and working as part of a team, having your drill charts/coordinate sheet and music at every rehearsal, fulfilling the role of an exemplary performer for this organization, & representing UTSA in an acceptable manner.
2. Attendance

Absence points are assigned based on the following:

Tardy to rehearsal = .5 absence point

Missing a rehearsal = 1 absence point

Leave rehearsal before 8:45pm = 1 absence point

Leave rehearsal AFTER 8:45pm and before the completion of dismissal = .5 absence point

Missing a Friday rehearsal of a gameweek = 3 absence points

Missing any assigned service performance = 3 absence points

Missing any gameday (rehearsal and performance combined)= 9 absence points

3. Be aware that accruing points DEDUCTS from the final grade. The more points, the LOWER the grade.

### **Other Attendance Items that will incur Absence Points**

1. The absence of music or drill charts/coordinate sheet will count as an additional absence point (1) per infraction. Come prepared every day!
2. Proper rehearsal attire (no sandals or open toed shoes during rehearsals). Those who attend rehearsal in open toed shoes or sandals will receive 1 absence point and possibly be asked to leave the rehearsal area for their own safety.
3. Two tardies will be considered equal to a rehearsal absence.
4. Missing more than half of any regular rehearsal will change a tardy to an absence. (arriving after 8:15 or leaving before 8:15)
5. An **unexcused** absence from a Friday Continuity/Dress Rehearsal and/or game day rehearsal will count as 3 absences points (each) and lower the student's grade by the cumulative result one of these absences.
6. Not having your instrument at a rehearsal or sitting on the sideline is considered 1 absence point.
7. The Directors may assign an administrative absence or absences in any circumstance where the student is unprepared or disruptive in a rehearsal or performance environment (As outlined throughout this handbook). The director can only give administrative absences. The student will be informed at the time the administrative absence is given or through blackboard.
8. A gameday consists of a walkthrough/continuity rehearsal and a performance
9. Any member accruing 10 absences or points, for any reason, will be dropped from the course with financial responsibilities occurring based on the date of drop, and financial holds for double the amount of any equipment in the student's possession placed until said equipment is returned.

### **Performance Absences**

An unexcused performance absence warrants a failing grade (6 absence points) and possible dismissal from SOSA at the Director's discretion. Unexcused Full band performance absences CAN NOT be made up. Very little leeway is given for performance absences. Work is not an excuse, as you should plan your schedule accordingly.

**PERFORMANCES IN THE PERFORMANCE CALENDAR ARE NOT OPTIONAL, THIS INCLUDES ALL BOWL GAMES.**

**\*\* NOTE** - Having an absence excuse does not guarantee the absence is excused. The Director always has final discretion. An excuse form will be made available outside of the director's door. The form must be turned in to a Student Assistant the rehearsal immediately following the absence. Excuse requests will be given an answer or removed from Blackboard before grades are computed at the end of the semester.

**Please Note – Tardies are not excusable**

**The first 2 absence points are not excusable, for any circumstances.**

Students should only turn in an absence form when they incur their 3<sup>rd</sup> absence point.

### **Away Trips/Bowl Games**

**BOWL GAMES ARE INCLUDED IN GRADING. EVEN IF THEY ARE AFTER CLASSES END.**

All policies and procedures apply on away trips including attendance. Repercussions for disregard of policies and procedures on an away trip may be greater than normal at the discretion of the Director. If SOSA is selected to represent the University in this manner, updated information will be provided prior to departure. Members will be held to all policies made known in this handbook during the course of the trip as well as any additional set policies.

### **Service Performances**

**Each Member of the ensemble will be assigned a pep band letter/name at registration. This letter signifies the small pep ensemble that they are assigned to for the semester.**

**Service Performances** – Each Member of the 2021 UTSA SOSA will be required to perform “Service” Performances during the Fall Semester. These performances are listed in the fall schedule so members may plan their schedule. A service absence counts as 3 absence points (lowers grade by one letter). Members may attend as many of the extra performances as they wish, but the assigned services will count towards the final grade.

**Service Subs** – if a member cannot attend their assigned service performance, they may send a substitute from another pep-band group and **same instrument** in their place and they will not be counted as absent.

**A member CANNOT sub for another member for a performance they were originally assigned to attend.**

Note – If two members wish to switch pep bands, they must both meet with the Assistant Director to make the switch official.

### **Pre-Excused Performance Absences**

Pre-Excused Performance Absences are those absences that are known ahead of time to conflict with a performance. If you know of a performance that you will miss during the season you must contact the Director, **no later than the Friday of Band Camp** – August 20<sup>th</sup>, 2021. Requests will be reviewed by the Director and decisions will be made before the end of Census week so that if the absence is not excused the student will be able to drop SOSA class at that time. Note – Only 1 performance is pre-excusable for the semester. If there are other conflicts, the student should drop the class.

**Excused performance absences still impact the final grading for the student.**

**Though a failing grade may not be assessed, the Director may still assign a lower grade at his or her discretion.**

### **NOTE**

**Tardies and absences are additive; in other words, if a member has absences as well as tardies, he/she should expect his/her grade to be lowered a cumulative total in relation to the chart above.**

If you are too sick to rehearse, go home, go to the clinic, and turn in all paperwork associated with those absences. **DO NOT MAKE YOURSELF OR THE REST OF THE ENSEMBLE MORE SUSCEPTIBLE TO EVEN MORE HEALTH ISSUES.**

### **Extra Performances/Absence Relief**

Occasionally, during the semester, extra performance opportunities may be requested. These will be assigned on a volunteer basis. The administration will ensure the performers are treated professionally and collegially during the performance. This usually includes all transportation, food (if performance window is longer than 4 hrs) and break rooms etc.

**Absence Make Up** –If a student has unexcused absences during the semester, **taking part in one of these extra performances will eliminate 2 absences points from their attendance record.** A member may not do an extra performance for a later absence. Absences are only credited AFTER the absence has taken place.

**SERVICE PERFORMANCES DO NOT ERASE ABSENCES, BUT SUBSTITUTING and performing in ABSENCE RELIEF PERFORMANCES DOES**

**Members, who sign up for a service performance and do not attend the performance, will have an additional absence assigned to their attendance record. For extra performances, SOSA will utilize the web-based sign-in software, Sign-Up Genius.**

## Social Media

### **UTSA Spirit of San Antonio Social Media Policy**

Members of the UTSA Spirit of San Antonio serve as representatives of the SOSA organization, The UTSA Department of Music, The UTSA Athletic Department, and the University of Texas at San Antonio.

Members are encouraged to conduct themselves with this principal in mind when engaging in social media and all other forms of media.

Some actions or commentary may necessitate action from the administration through the Office of Student Affairs, or other areas of the UTSA Administration.

### **SOSA Website**

<http://www.utsabands.org/sosa>

### **FACEBOOK**

It is recommended that members follow our Facebook page as information is also posted there. The percussion, Colorguard and Pom Squad each have their own Facebook groups.

EACH MEMBER SHOULD ALSO JOIN THE MEMBERS ONLY GROUP.

<https://www.facebook.com/groups/UTSA.SOSA/>

Check your UTSA and personal email accounts daily, all announcements will be sent to this account. Please make sure that the administration has your most reliable email on file.

# Helpful Reminders

## Financial Obligations

As part of SOSA, each member is required to:

- Register and pay for the class
- Winds and Percussion must purchase approved white socks
- Purchase a UTSA Parking Pass from Parking Services (if applicable)
- Auxiliary members may be asked to purchase small uniform items

## Music and Drill Charts

Put your music in your flip folders, and bring both your flip folders and coordinate sheets to EVERY rehearsal. Members who do not have these items at rehearsal will be marked absent for that class.

## End Of Semester Instrument/Equipment Check-in

**End of semester check-in is mandatory for all members and cannot be done by proxy.** Those choosing not to turn in their equipment during the assigned time(s) will receive 6 absence points and have a hold placed on their records for double the amount of equipment and items assigned to them. As members of the ensemble are issued items that are State-Owned property, the Spirit of San Antonio is required to notify law-enforcement at the end of each semester for any property that has yet to be returned. Check-in for Fall 2021 will be announced and posted during the semester.

## Overrides for SOSA Class

Overrides will be given at the Director's discretion. Overrides will **only** be given to those members of SOSA who are going into their 3rd year and higher or for those who have an extreme conflict or a class required for their major at the scheduled time that SOSA meet (7:00pm - 9:30pm.) The procedure for obtaining an override is as follows:

- Must submit written letter of request to the Director no later than the Friday of band camp
- Approved requests will be submitted to the Music Department office for processing
- Approved overrides will be delivered to the band office and then will be distributed to the individual students
- Students must take approved overrides to the proper location for final processing.

**The Director has final discretion on all overrides.**



## 2021 Shows

Show 1 – 9/11 Remembrance and Salute to First Responders

**Show 2 – Salute to the 80's**

Show 3– Latin (short show)

Show 4 – Homecoming

Show 5 – Salute to the Armed Forces

**Show 6 – HouseParty 11.0SA**

***Featuring music from Bruno Mars and BTS***

### **Spirit of San Antonio**

#### ***Summer Band/Pre-Season Camp Schedule***

(Some blocks may be adjusted for weather or as band needs)

#### **Check-in Weekend**

**Fri 8/13**

***All members***

10am-5pm Check-in/Register (anytime in this block)

10-5p Dorm Check-in

***Full Band All Winds/Percussion/Auxiliaries***

6:30pm Full Band Meeting – UTSA Sombrilla

#### **Camp**

**Saturday 8/14**

	<b>New Winds/Staff</b>	<b>Percussion</b>	<b>Auxiliaries</b>	<b>Old Winds</b>
10a-12p	Field Basic Manual Fwd/Bwd/Flanks	Field	Field	Off
12-2:00pm	Lunch	Lunch	Lunch	
2:00-4:30p	Sectionals/RH Steps Warm/Ups, Chorales	TBA/Ind. Practice	Sectionals	
7:00-10pm	Recital Hall/Steps Warm-ups Chorales Pregame Cheers Stand Tunes (old)	TBA/Ind. Practice	Sectionals	

## MAKE SURE TO HAVE WATER EVERYDAY!

### Sunday 8/15

2:00-4:30p	Sectionals/RH Steps Warm/Ups, Chorales	TBA/Ind. Practice	Sectionals	Off
7:00-10pm	Recital Hall/Steps Warm-ups Chorales Pregame Cheers Stand Tunes (old)	TBA/Ind. Practice	Sectionals	AT REHEARSAL

### Monday 8/16

	<b>All Winds</b>	<b>Percussion</b>	<b>Auxiliaries</b>
10a-12p	Field Basic Manual Fwd/Bwd/Flanks	Sectionals Begin Rotations Technique Block	Sectionals
12-2:00pm	Lunch	Lunch	Lunch
2:00-4:30p	Sectionals/RH (Monday) Warm/Ups, Chorales Pregame Old Cheers Lead Tpt Hearings	Sectionals Finalize Assignments	Sectionals
7:00-10pm	Recital Hall Warm-ups Chorales Pregame Cheers Stand Tunes (old)	Sectionals Line set Technique Block Pregame Prelude	Sectionals

## MAKE SURE TO HAVE WATER EVERYDAY!

**Tuesday 8/17 - WIND PREGAME SPOTS SET AT THE END OF TUESDAY**

	<b>All Winds</b>	<b>Percussion</b>	<b>Auxiliaries</b>
10a-12p	Field review slides full block	Sectionals Technique Block Pregame Prelude	Sectionals
12-2:00pm	Lunch	Lunch	Lunch
2:00-4:30p	Sectionals/RH Warm-ups Chorales Pregame Prelude Show 1	Sectionals Technique Block Pregame Prelude	Sectionals
7:00-10pm	Recital Hall Warm-ups Chorales Pregame Prelude Show 1	Sectionals Technique Block Pregame Prelude	Sectionals

**Wednesday 8/18 – WIND PRELUDE/SHOW 1 SPOTS ASSIGNED AT THE END OF WED.**

	<b>All Winds</b>	<b>Percussion</b>	<b>Auxiliaries</b>
10a-12p	Field review Learn block	Sectionals Technique Block Battery to Field at 10:45a	Field review Learn Block
12-2:00pm	Lunch	Lunch	Lunch
2:00-4:30p	Sectionals/RH Warm-ups Chorales Pregame Prelude Show 1 Show 2 Stand Tunes/Cheers (new)	Sectionals Technique Block Pregame Prelude show 1(?)	Sectionals
7:00-10pm	Field Learn Pregame	Field Learn Pregame	Field Learn Pregame

**MAKE SURE TO HAVE WATER EVERYDAY!**

## Camp (Cont'd)

### Thursday 8/19

	<b>All Winds</b>	<b>Percussion</b>	<b>Auxiliaries</b>
10a-12p	Field Review Block Review Pregame	Field (pit in sect) Review Block Review Pregame	Field Review Block Review Pregame
12-2:00pm	Lunch	Lunch	Lunch
2:00-4:30p	Sectionals/RH All	Sectionals All	Sectionals All
7:00-10pm	Field Circles Block Music reh of Pregame Music reh of Prelude Begin Learning Prelude Pregame reh	Field (All) Circles Block Music reh of Pregame Music reh of Prelude Begin Learning Prelude Pregame reh	Field Circles Block Music reh of Pregame Music reh of Prelude Begin Learning Prelude Pregame reh

### Friday 8/20 – SWAG DAY

	<b>All Winds</b>	<b>Percussion</b>	<b>Auxiliaries</b>
10a-12p	Field Circles Block Finish Prelude Pregame reh	Field Circles Block Finish Prelude Pregame reh	Field Circles Block Finish Prelude Pregame reh
12-2:00pm	Lunch	Lunch	Lunch
2:00-4:30p	Sectionals All	Sectionals All	Sectionals All
6:00pm	RH 7p Paseo Perf	RH 7p Paseo Perf	RH 7p Paseo Perf

### Saturday 8/21 – Friends and Family Day

	<b>All Winds</b>	<b>Percussion</b>	<b>Auxiliaries</b>
10a-12p	Field Regular Reh Prelude Reh 1 <sup>st</sup> Pregame Run	Field Regular Reh Prelude Reh 1 <sup>st</sup> Pregame Run	Field Regular Reh Prelude Reh 1 <sup>st</sup> Pregame Run

12p – BBQ by Smoke Shack – Fieldhouse

**Sunday 8/22**

**Light up UTSA Event – Full Band -- Pep Band Outfit**

Schedule TBA

**Monday 8/23 – First Day of Class/Regular Rehearsals Begin**

7:00pm – 9:30p – Full Band Rehearsal on SOSA Field

Review Pregame

Review Prelude

**MAKE SURE TO HAVE WATER EVERYDAY!**

**MAKE SURE TO HAVE WATER EVERYDAY!**

**UTSA Bands**  
 Spirit of San Antonio  
**2021 TENTATIVE Rehearsal/Performance Schedule (will be finalized Aug. 23<sup>rd</sup>)**

**Pep Bands – A – Orange, B – Blue, C – White**  
**Fiesta Band – Student Staff**

**Week 1**

8/23	Mon.	Normal Rehearsal	Pregame/Show 1
8/25	Wed.	Normal Rehearsal	Pregame/Show 1
<b>8/27</b>	<b>Fri.</b>	<b>Howdy Rowdy Bash W/Tinashe @ Fiesta Texas</b>	
		<b>Full Band</b>	

**Week 2**

8/30	Mon	Normal Rehearsal	Pregame/Show 1/2
9/1	Wed.	Normal Rehearsal	Pregame/Show 1/2
9/3	Fri.	Normal Rehearsal	Pregame/Show 1/2
9/4	Sat.	(Team Away Vs. Illinois)	

**Week 3**

**Game Week 1 – Show 1 – 9/11 Remembrance/Salute to First Responders**

9/6	Mon	<i>NO REHEARSAL – Labor Day</i>	
9/8	Wed	Normal Rehearsal	Pregame/Show 1/2
9/10	Fri.	Normal Rehearsal	Pregame/Show 1
<b>9/11</b>	<b>Sat.</b>	<b>Home Game Vs. Lamar</b>	<b>Pregame/Show 1</b>

**Week 4**

**Game Week 2 – Show 2 – Salute to the 80's**

9/13	Mon	Normal Rehearsal	Show 2
9/15	Wed	Normal Rehearsal	Show 2
9/17	Fri	Normal Rehearsal	Pregame/Show 2
<b>9/18</b>	<b>Sat.</b>	<b>Home Game Vs. MTSU</b>	<b>Pregame/Show 2</b>

**Week 5**

9/20	Mon	Normal Rehearsal	Show 3
9/22	Wed	Normal Rehearsal	Show 3
9/24	Fri	Normal Rehearsal	Show 3
9/25	Sat	(Team Away Vs. Memphis)	
<b>9/25</b>	<b>Sat</b>	<b>Volleyball Game – 12:00p</b>	
		<b>Pep Band A – Orange</b>	

**Week 6**

**Game Week 3 – Show 3 – Latin (short show)**

9/27	Mon.	Normal Rehearsal	Show 3
9/29	Wed	Normal Rehearsal	Show 3
10/1	Fri.	Normal Rehearsal	Show 3
10/2	<b>Sat.</b>	<b>Home Game Vs. UNLV</b>	<b>Pregame/Show 3</b>

**Week 7**

10/4	Mon	Normal Rehearsal	Show 4/5
10/6	Wed	Normal Rehearsal	Show 4/5
10/8	Fri.	Normal Rehearsal	Pregame/Show 4
10/9	Sat	(Team away Vs. WKU)	
<b>10/9</b>	<b>Sat</b>	<b>Volleyball Game – 1:00p</b>	
		<b>Pep Band B – Blue</b>	

<b>Week 8</b>		<b>Game Week 4 - Show 4 – Homecoming</b>	
10/11	Mon.	Normal Rehearsal	Show 4 and 5
10/13	Wed.	Normal Rehearsal	Show 4 and 5
10/15	Fri.	Short Rehearsal	Pregame/Show 4
<b>10/16</b>	<b>Sat.</b>	<b>Home Game Vs. Rice – Homecoming</b>	<b>Pregame/Homecoming</b>
<b>Week 9</b>			
10/18	Mon.	Normal Rehearsal	Show 5/6
10/20	Wed.	Normal Rehearsal	Show 5/6
10/22	Fri.	Normal Rehearsal	Pregame/Show 5
10/23	Sat	(Football away vs. LaTech)	
<b>Week 10</b>			
10/25	Mon.	Normal Rehearsal	Show 5/6
10/27	Wed.	Normal Rehearsal	Show 5/6
10/29	Fri.	Normal Rehearsal	Show 5/6
10/30	Sat	(Football Open Week)	
<b>10/30</b>	<b>Sat</b>	<b>Volleyball Game – 1:00p</b> <b>Pep Band C – White</b> <b>POSSIBLE UIL AREA PERFORMANCE</b>	
<b>Week 11</b>		<b>POSSIBLE UIL STATE PERFORMANCE</b>	
11/1	Mon.	Normal Rehearsal	Show 5/6
11/3	Wed	Normal Rehearsal	Show 5/6
11/5	Fri	Normal Rehearsal	Show 5/6
11/6	Sat	(Team away vs. UTEP)	
<b>Week 12</b>		<b>Game Week 5 – Show 5 Tribute to The Armed Forces/POSSIBLE UIL</b>	
11/8	Mon.	Normal Rehearsal	Show 5/6
11/10	Wed.	Normal Rehearsal	Show 5/6
11/12	Fri.	Normal Rehearsal	Show 5/6
<b>11/13</b>	<b>Sat.</b>	<b>Home Game Vs. Southern Miss</b>	<b>Pregame/Show 5</b>
<b>Week 13</b>		<b>Game Week 6 – Show 5 HouseParty 11.0SA and Senior Tribute</b>	
11/15	Mon.	Normal Rehearsal	Show 6 – Drum Major Aud
11/17	Wed.	Normal Rehearsal	Show 6 – Drum Major Aud
11/19	Fri.	Normal Rehearsal	Show 6 – Drum Major Aud
<b>11/20</b>	<b>Sat.</b>	<b>Home Game Vs. UAB</b>	<b>Pregame/Show</b>
<b>Week 14</b>			
11/22	Mon.	Normal Rehearsal	Show TBA Drum Major Auditions
11/24	Wed.	<i>No Rehearsal – Thanksgiving Break</i>	
11/26	Fri.	<i>No Rehearsal – Thanksgiving Break</i>	
<b>11/27</b>	<b>Sat</b>	<b>(Team away at UNT) – POSSIBLE PEP BAND</b>	
<b>Week 15 – Bowl Prep Week/Banquet Week</b>			
11/29	Mon	Bowl Rehearsal or Check in Equipment	
12/1	Wed	Banquet	
12/3	Thu	Possible Rehearsal/Travel for CUSA Championship Game	
<b>12/4</b>	<b>Sat.</b>	<b>CUSA Championship Game</b>	<b>TBA</b>

**Alternate Instrument and Uniform Check-in – During Exam Time pending Bowl Status**

**Winter Basketball (possible \$\$\$)**

**12/30 Men/Women**  
**1/1 Women**  
**1/6 Men**  
**1/8 Men**  
**1/13 Women**  
**1/15 Women**

**2020-21 Possible Bowl Games**

**Bahamas Bowl**  
**New Mexico Bowl**  
**Radiancance Technologies Independence Bowl**  
**New Orleans Bowl**  
**Cure Bowl**  
**Armed Forces Bowl**  
**Boca Raton Bowl**  
**First Responder Bowl**  
**Frisco Bowl**  
**Camellia Bowl**  
**Fenway Bowl**  
**Birmingham Bowl**  
**Gasparilla Bowl**  
**Myrtle Beach Bowl**

In addition, ALL BCS Bowl Games are a possibility, please check the schedules and be aware.



